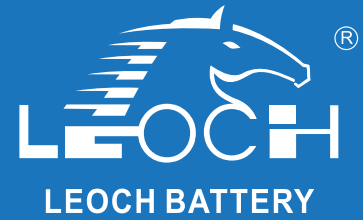




# LPCG Series-Deep Cycle Gel

## LPCG12-24(12V24Ah)

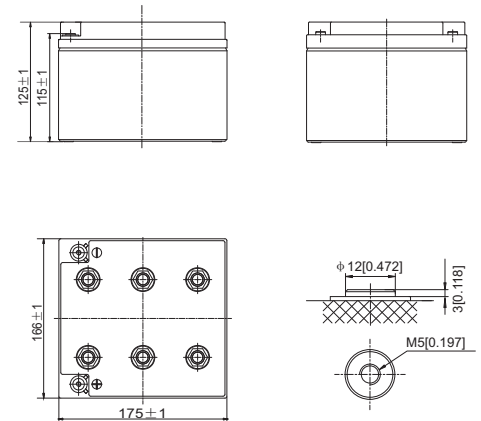


### Specifications

Rated Voltage	12V	
Nominal Capacity	24Ah (C <sub>20</sub> , 1.80V/cell)	
Dimension	Length	166±2mm (6.54 inches)
	Width	175±2mm (6.89 inches)
	Container Height	125±2mm (4.92 inches)
	Total Height	125±2mm (4.92 inches)
Approx Weight	8.50 Kg (18.7lbs)	
Terminal	M5	
Container Material	ABS	
Rated Capacity (25°C)	24.0 Ah	(20hr, 1.20A, 1.80V/cell)
	22.6 Ah	(10hr, 2.26A, 1.80V/cell)
	19.8 Ah	(5hr, 3.95A, 1.75V/cell)
	17.3 Ah	(3hr, 5.76A, 1.75V/cell)
	13.6 Ah	(1hr, 13.6A, 1.67V/cell)
Max. Discharge Current	240A (5s)	
Internal Resistance (25°C)	Approx 15.8mΩ	
Operating Temp. Range	Discharge : -20 ~ 55°C (-4 ~ 131°F)	
	Charge : 0 ~ 40°C (32 ~ 104°F)	
	Storage : -20 ~ 50°C (-4 ~ 122°F)	
Nominal Operating Temp. Range	25±3°C (77±5°F)	
Cycle Use	Initial Charging Current less than 4.8A. Voltage 14.4V~14.7V at 25°C(77°F)Temp. Coefficient -30mV/°C	
Standby Use	Initial Charging Current less than 4.8A. Voltage 13.5V~13.8V at 25°C(77°F)Temp. Coefficient -20mV/°C	
Effect of temp. to Capacity	40°C (104°F)	103%
	25°C (77°F)	100%
	0°C (32°F)	86%
Self Discharge	LPCG series batteries may be stored for up to 9 months at 25°C(77°F) and then a freshening charge is required. For higher temperatures the time interval will be shorter.	



### Layout



### Constant Current Discharge (Amperes) at 25 °C (77°F)

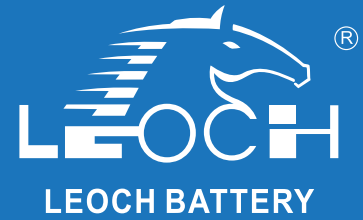
F.V/Time	1h	2h	3h	4h	5h	6h	8h	10h	20h
1.85V/cell	10.9	6.81	5.16	4.25	3.64	3.15	2.51	2.13	1.17
1.80V/cell	11.9	7.33	5.52	4.52	3.83	3.30	2.61	2.26	1.20
1.75V/cell	12.7	7.70	5.76	4.68	3.95	3.40	2.69	2.35	1.22
1.67V/cell	13.6	8.30	6.13	4.93	4.14	3.56	2.79	2.42	1.25
1.60V/cell	13.8	8.57	6.32	5.08	4.25	3.64	2.85	2.46	1.26

### Constant Power Discharge (Watts/cell) at 25 °C (77°F)

F.V/Time	1h	2h	3h	4h	5h	6h	8h	10h	20h
1.85V/cell	21.2	13.3	10.1	8.34	7.16	6.21	4.97	4.23	2.33
1.80V/cell	23.0	14.2	10.7	8.82	7.49	6.48	5.17	4.48	2.38
1.75V/cell	24.3	14.9	11.2	9.10	7.72	6.66	5.31	4.66	2.42
1.67V/cell	25.8	15.9	11.8	9.53	8.05	6.94	5.49	4.79	2.48
1.60V/cell	26.1	16.3	12.1	9.80	8.24	7.08	5.58	4.86	2.50

# LPCG Series-Deep Cycle Gel

## LPCG12-24(12V24Ah)



### Applications

- Electrically powered wheelchair
- Vehicle in place of walking
- Lawn-mower
- Golf trolleys and golf cart
- Railway and marine systems

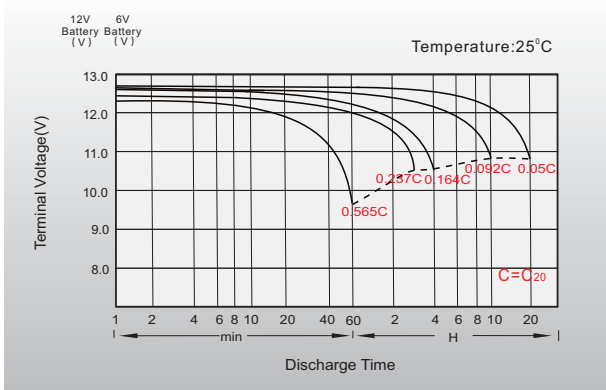
### General Features

- Special plate design, long cycle life
- $\geq 600$  Cycles @ 80%DOD
- Operation temperature  $-20 \sim 55^{\circ}\text{C}$
- $\leq 2\%$  Self discharge per month
- Good deep discharge resilience performance

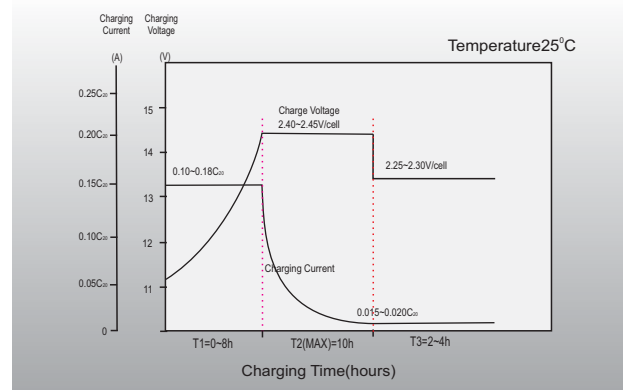
### Standards

- IEC 60896 Certified
- Classified as "Long Life" according to Eurobat
- UL Certified
- Manufactured in Leoch® IATF16949, ISO 9001, ISO 14001 and OHSAS 18001 certified production facilities

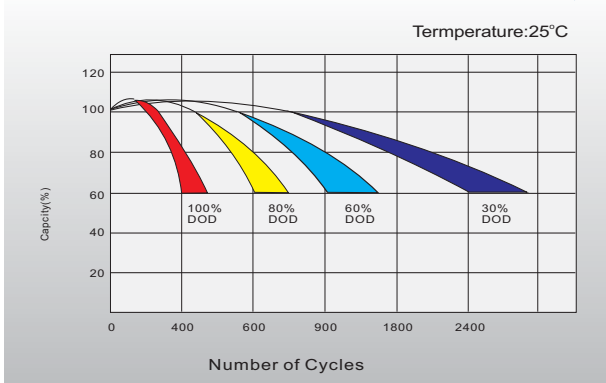
### Discharge Characteristics



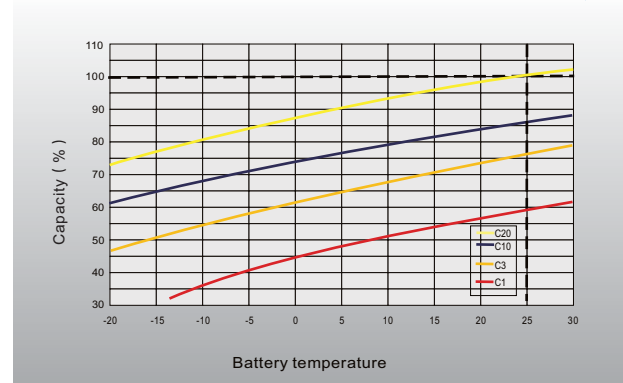
### Charging Characteristics



### Cycle Life in Relation to Depth of Discharge



### Temperature Effects in Relation to Battery Capacity



## Sales Offices Worldwide

#### China Sales Office

5th Floor, Xinbaohui Bldg., Nanhai Blvd.,  
Nanshan, Shenzhen, China. 518052  
Tel: +86-755-86036060 (100 lines)  
Fax: +86-755-26067269  
E-mail: export@leoch.com

#### HongKong Sales Office

Workshop C, 33/F, TML Tower, No. 3 Hoi Shing Road,  
Tsuen Wan, New Territories, Hong Kong  
Tel: +852 35786666  
Fax: +44 1452 690125  
E-mail: sales.hk@leoch.com

#### Singapore Sales Office

No. 1 Tech Park Crescent,  
Singapore 638131  
Tel: +65 68636078  
Fax: +65 6863 6079  
Email: sales.sg@leoch.com

#### Australia Sales Office

2 /29 Tarlington Place, Smithfield. NSW 2164  
Australia  
Tel: 02 9756 0950  
E-mail: sales.au@leoch.com

#### North America Sales Office

19751 Descartes  
Foothill Ranch, CA 92610, USA  
Tel: 949-588-5853  
Fax: 949-588-5966  
E-mail: sales@leoch.us

#### UK Sales Office

9B Wheatstone Court. Waterwells, Business Park,  
Gloucester, GL2-2AQ, UK United Kingdom  
Tel: +44(0) 1452 729428 / 1452 729696  
Fax: +44 1452 690125  
E-mail: Sales.Europe@leoch.com

#### EMEA Sales Office

1 Deligiorgi St., 121 31 Athens,  
Greece  
Tel: +30 210 5760318 (2 lines)  
E-mail: support\_EMEA@leoch.com

#### India Sales Office

Shed no.A-53(b), 2nd Stage of Peenya Industrial Area,  
Bangalore North Taluk, Bangalore-560058, India  
Tel: +91-80-23440018/23440019  
Fax: +91-80-23440017  
E-mail: indiasales@leoch.com



[Http://www.leoch.com](http://www.leoch.com)  
[Http://www.leoch.us](http://www.leoch.us)

© 2019 LEOCH. All rights reserved.  
Trademarks and logos are the property of LEOCH and its affiliates unless otherwise noted.  
Subject to revisions without prior notice.

Publication No.:LB-LPCG12-24-PD-EN-V2.1-201912